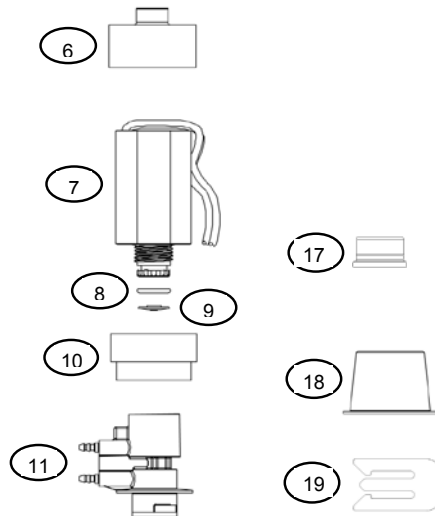
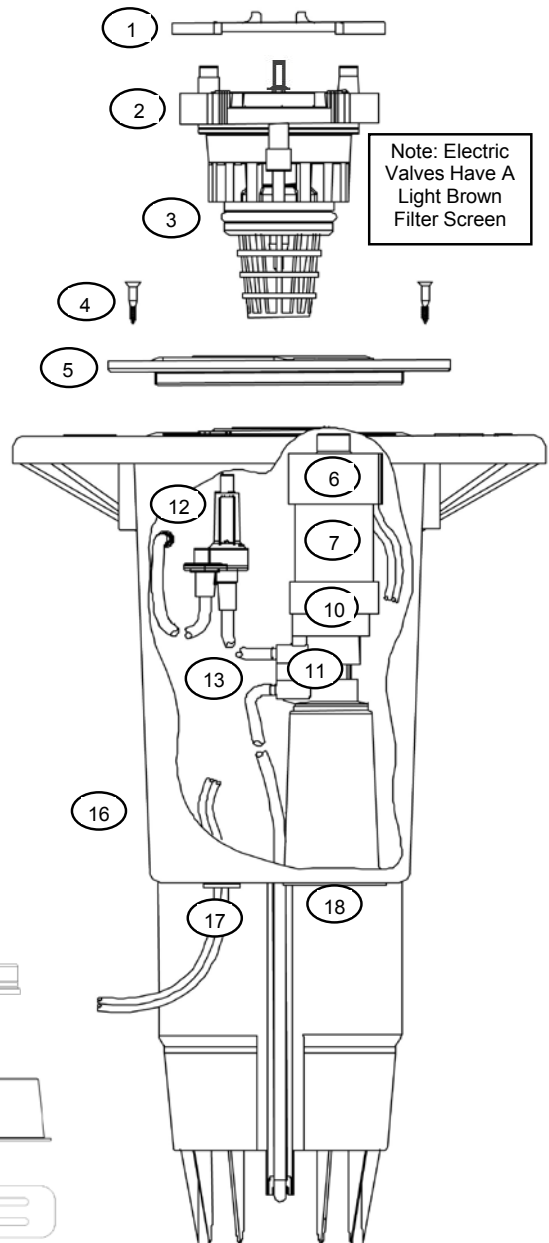


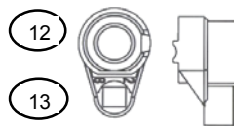
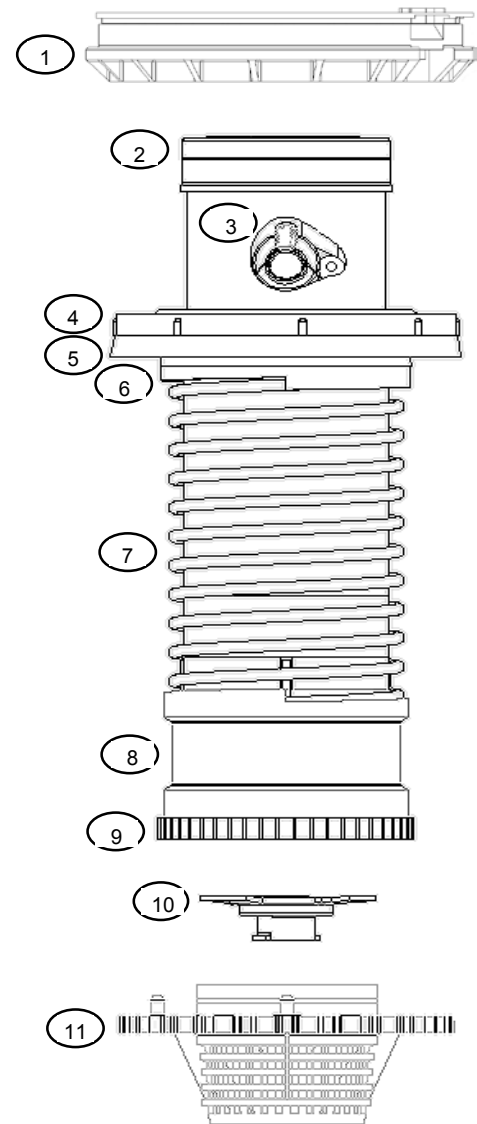
G800E Body Assembly: Electric Valve-In-Head

Item	Description	Part No.	Price
1	Snap Ring - Lower (White)	526800	
2	Inlet Valve Assembly - Electric VIH (Light Brown Screen)	563400	
3	O-Ring - Inlet Valve To Body Seal	426300	
4	Screw - Flange Lid Retainer	376400	
5	Lid - Flange Compartment - Electric Recessed Yardage Marker Area	449420	
	Lid - Flange Compartment - Electric Raised Yardage Marker Area	449410	
6	Selector Cap & Detent Ring Kit	461536	
7	Solenoid Kit (Includes Items 6, 7, 8, 9 & 10)	461537	
8	O-Ring - Solenoid Thread Seal	262600	
9	Seal - Solenoid Plunger Seal	364400	
10	Selector Cap & Detent Ring Kit	461536	
11	Pilot Valve Kit - Electric VIH (black)	461540	
12	Pressure Regulator Kit - Variable (50 to 120 psi)	674800	
13	Control Tubing Kit - incl: 24" of 1/8" tubing, connector & retainers (2)	461539	
14	Tube Retainer - 1/8" Tubing (not shown)	476000	
15	Connector - 1/8"x 1/8" Tubing (not shown)	494400	
16	Body Assembly, Electric VIH - incl: tubing to pilot valve & tubing to regulator plus items 4,5,16,17 & 18. (does not include pilot valve or pressure regulator)	463736	
17	Cap, Protective - solenoid wires	643900	
18	Cap, Protective - lower compartment	474400	
19	Restraint -Solenoid Wires	669300	



G875 Riser Assembly: Adjustable Arc Configuration

Item	Description	Part No.	Price
1	Snap Ring Assy. - Upper (Black)	610100	
	Snap Ring Assy. - Upper (Purple) applications: reclaimed water sites	610105	
2	Rubber Logo Cap - (Black)	402720	
3	Screw - Nozzle Retainer	053143	
4	Support - Riser Seal Upper	450400	
5	Seal - Riser	450500	
6	Support - Riser Seal Lower	052383	
7	Spring - Riser Retraction	348700	
8	Bumper - Riser	405700	
9	Riser Assembly - incl: items 1 - 12	474571	
10	Plate - Stator Adjustment	439600	
11	Screen - Riser Inlet	450600	
12	Nozzle Pack	461532	
13	Nozzle Assy - Bag Of 25		
	# 8 - Light Brown	463404	
	#10 - Light Green	463405	
	#13 - Light Blue	463406	
	#15 - Gray	463407	
	#18 - Red	463408	
	#20 - Dark Brown	463409	
	#23 - Dark Green	463410	
#25 - Dark Blue	463411		
	#28 - Black	463412	



G880 Riser Assembly: Full-Circle Configuration

Item	Description	Part No.	Price
1	Snap Ring Assy. - Upper (Black)	450100	
	Snap Ring Assy. - Upper (Purple) applications: reclaimed water sites	450105	
2	Screw - Shroud Retainer	376400	
3	Rubber Logo Cap - (Black)	453800	
4	Shroud - Nozzle Housing	454100	
5	Seal Block	664405	
6	O' Ring - Seal	549400	
7	Spring - Riser Retraction	553700	
8	Face Seal - White	552400	
9	Riser Assembly - SRU - includes items 1 - 14 + #48 nozzle installed	460009	
10	Plate - Stator Adjustment	452700	
11	Screen - Riser Inlet	286800	
12	Nozzle Pack - Primary Nozzles (not shown) one each #25 thru #53	460002	
13	Nozzle - Short Range - Black	495000	
14	Nozzle - Mid-Range - Blue	494900	
15	Nozzle - Primary - Bag Of 25		
	#25 - Light Blue	460003	
	#33 - Gray	460004	
	#38 - Red	460005	
	#43 - Dark Brown	460006	
	#48 - Dark Green	460007	
	#53 - Dark Blue	460008	

